

**Patented level adjustment
with ramp lift**

**Robust and powerful for
high throughput efficiency**

**Ideal for hardest applications
with heavy loads**

**Adjustment over uneven floors
with sprung and cushioned
support wheels**



EJE 220r/222r

Electric pedestrian operated pallet truck (2000 and 2200 kg)

The EJE Series 2 pallet trucks are used wherever there is a lot of activity and where high productivity is required: during lorry loading and offloading over ramps; in hard continuous operations with heavy loads; in 2-shift or even 3-shift operations. Here, the advantages of the EJE are particularly effective:

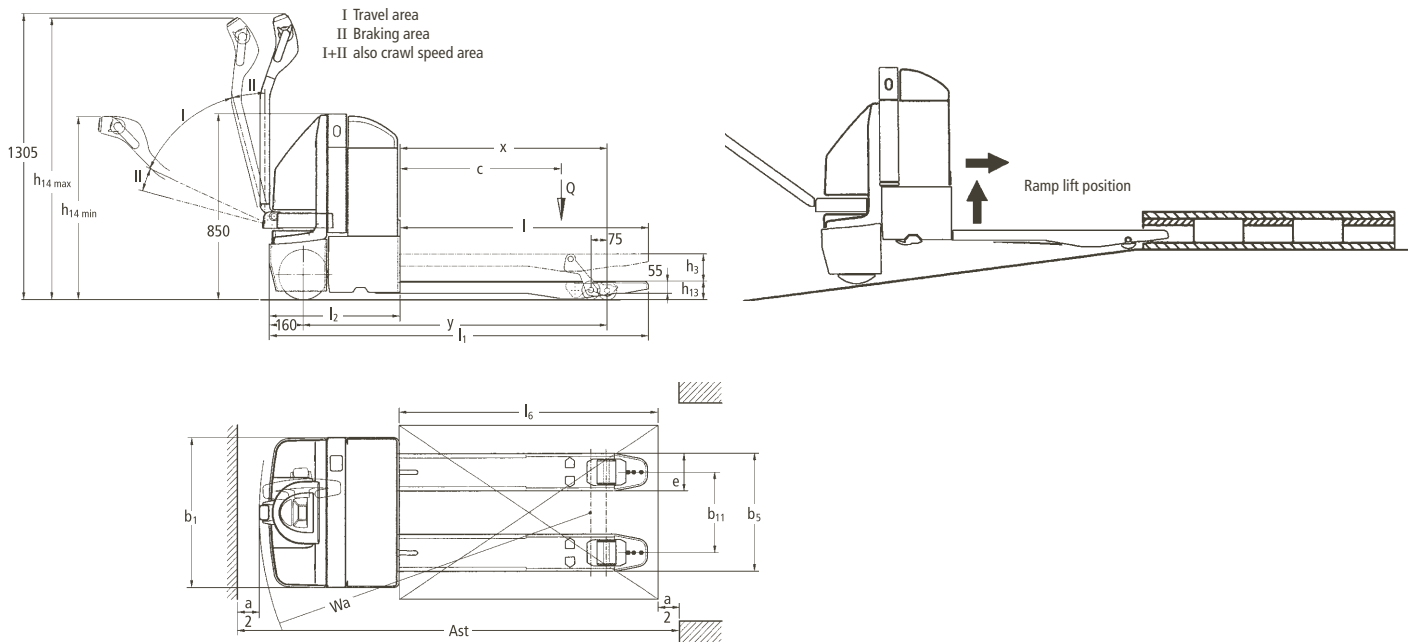
- Extremely robust chassis and load section
- High capacities
- Powerful motors
- State-of-the-art control electronics
- Excellent energy management

In addition to the normal lift, the trucks are equipped with a patented ramp lift

that facilitates level adjustment on ramps with gradients up to 15%. The ramp lift works separately from the normal lift. The first pallet row on lorries can be loaded and offloaded without any problem.

The required energy for such demanding performance is drawn from batteries up to 375 Ah.

EJE 220r/222r



Technical Data in line with VDI 2198 as at: 10/2009

Identification	1.1	Manufacturer (abbreviation)		Jungheinrich	Jungheinrich	1.1
	1.2	Manufacturer's type designation		EJE 220r	EJE 222r	1.2
	1.3	Drive		electric	electric	1.3
	1.4	Operator type		pedestrian	pedestrian	1.4
	1.5	Load capacity/rated load	Q (t)	2	2.2	1.5
	1.6	Load centre distance	c (mm)	600	600	1.6
	1.8	Load distance, centre of drive axle to fork	x (mm)	909 ²⁾	909 ²⁾	1.8
	1.9	Wheelbase	y (mm)	1340 ²⁾	1340/1410 ²⁾⁴⁾	1.9
	Weights	2.1	Service weight incl. battery (see line 6.5)	kg	581	581
2.2		Axle loading, laden front/rear	kg	880/1700	920/1860	2.2
2.3		Axle loading, unladen front/rear	kg	450/131	450/131	2.3
Wheels, Chassis	3.1	Tyres		Vulkollan®	Vulkollan®	3.1
	3.2	Tyre size, front	mm	230x70	230x70	3.2
	3.3	Tyre size, rear	mm	85x110	85x110	3.3
	3.4	Additional wheels (dimensions)	mm	100x40	100x40	3.4
	3.5	Wheels, number front rear (x = driven wheels)		1x+2/2	1x+2/2	3.5
	3.6	Tread, front	b ₁₀ (mm)	476	476	3.6
	3.7	Tread, rear	b ₁₁ (mm)	370	370	3.7
Basic Dimensions	4.4	Lift (standard mast)	h ₃ (mm)	125	125	4.4
	4.9	Height of tiller in drive position min./max.	h ₁₄ (mm)	850/1305	850/1305	4.9
	4.15	Height, lowered	h ₁₃ (mm)	85	85	4.15
	4.19	Overall length	l ₁ (mm)	1760	1760/1830 ⁴⁾	4.19
	4.20	Length to face of forks	l ₂ (mm)	610	610/680 ⁴⁾	4.20
	4.21	Overall width	b ₁ /b ₂ (mm)	690/-	690/-	4.21
	4.22	Fork dimensions	s/e/l (mm)	55/170/1150	55/170/1150	4.22
	4.25	Distance between fork-arms	b ₅ (mm)	540	540	4.25
	4.32	Ground clearance, centre of wheelbase	m ₂ (mm)	30	30	4.32
	4.33	Aisle width for pallets 1000 x 1200 crossways	Ast (mm)	1971 ¹⁾	1971/2041 ¹⁾⁴⁾	4.33
	4.34	Aisle width for pallets 800 x 1200 lengthways	Ast (mm)	2021 ³⁾	2021/2091 ³⁾⁴⁾	4.34
4.35	Turning radius	Wa (mm)	1530 ²⁾	1530/1600 ²⁾⁴⁾	4.35	
Performance Data	5.1	Travel speed, laden/unladen	km/h	6.0/6.0	6.0/6.0	5.1
	5.2	Lift speed, laden/unladen	m/s	0.051/0.067	0.049/0.067	5.2
	5.3	Lowering speed, laden/unladen	m/s	0.06/0.06	0.06/0.06	5.3
	5.8	Max. gradeability, laden/unladen	%	10/20	9/20	5.8
	5.10	Service brake		electromagnetic	electromagnetic	5.10
Electric Engine	6.1	Drive motor rating S ₂ 60 min.	kW	1.3	1.5	6.1
	6.2	Lift motor rating at S ₃ 10%	kW	1.5	1.5	6.2
	6.3	Battery acc. to DIN 43531/35/36 A, B, C, no		DIN B	DIN B	6.3
	6.4	Battery voltage, nominal capacity K ₅	V/Ah	24/180	24/180/375 ⁴⁾	6.4
	6.5	Battery weight	kg	180	180	6.5
Others	8.1	Type of drive control		SpeedControl	SpeedControl	8.1

- 1) load section lowered: +75 mm; diagonal according to VDI: +366 mm
 2) load section lowered: +75 mm
 3) load section lowered: +75 mm; diagonal according to VDI: +204 mm
 4) short/long battery compartment

Make use of the advantages

Level adjustment with ramp lift

In addition to the normal lift, the trucks are equipped with a patented ramp lift that facilitates level adjustment on ramps with gradients up to 15%. The ramp lift works separately from the normal lift. The first pallet row on lorries can be loaded and offloaded without any problem.



Patented ramp lift

Powerful drive motor and "intelligent" controls

Advanced shunt-wound drive technology and control electronics (SpeedControl) ensure safe travel characteristics with adjustment opportunities to suit every application:

- The speed stipulated on the travel switch will be kept in every travel situation – also on uphill and downhill gradients.
- The EJE will brake automatically preventing unintentional rolling on ramps.
- Individually adjustable travel parameters facilitate optimum adjustment to suit any requirement.
- Energy reclamation with regenerative braking on deceleration
- 2-year warranty on drive motor.



Collision protection on battery compartment

Robust construction for hardest applications

- Chassis made of high quality 8 mm steel.
- Additional collision protection on battery compartment to guard against "dynamic" loads.
- Full rated load capacities up to fork tips (standard fork overhang).

Long operating times

Battery capacities up to 375 Ah ensure long operating times:



Travel stability with sprung support rollers

- Short version: 2 EPzS 180/250 Ah.
- Long version: 2 EPzS 375 Ah.

Stability during travel

Hard applications can also include doorway thresholds or passing over ramps. The EJE 220r/222r also masters these challenges:

- Spiral springs on support rollers even out uneven floors.
- Additional cushioning prevents shocks transferring through the chassis.

Reduced maintenance

Service-friendly components ensure long-term reduction of operating costs:

- Easy access to all components through the one-piece front cover.
- A drill hole in the chassis apron facilitates quick and easy removal of the drive wheel.

Well-informed at any time

Control instruments give the operator a good feeling of having everything under control at any time:

- Information display "CanDis" (optional) with battery discharge indicator with lift lockout as well as an additional operating hour meter and service code memory.

Additional equipment

- Load section for sideways battery removal.
- Cold store version.
- Entry rollers.
- Vertical load guard.

Jungheinrich UK Ltd.

Head Office:

Sherbourne House · Sherbourne Drive
Tilbrook · Milton Keynes MK7 8HX
Phone 01908 363100
Fax 01908 363180

info@jungheinrich.co.uk
www.jungheinrich.co.uk



JUNGHEINRICH
Well worthwhile